





Scale: 1:50,000

## Map Showing Major Watercourses

2/18/2021

- Legend
- Watercourses
  - ProjectArea
  - Hydrological Units

on lands belonging to

*Opal Mountain Ranch LLC*

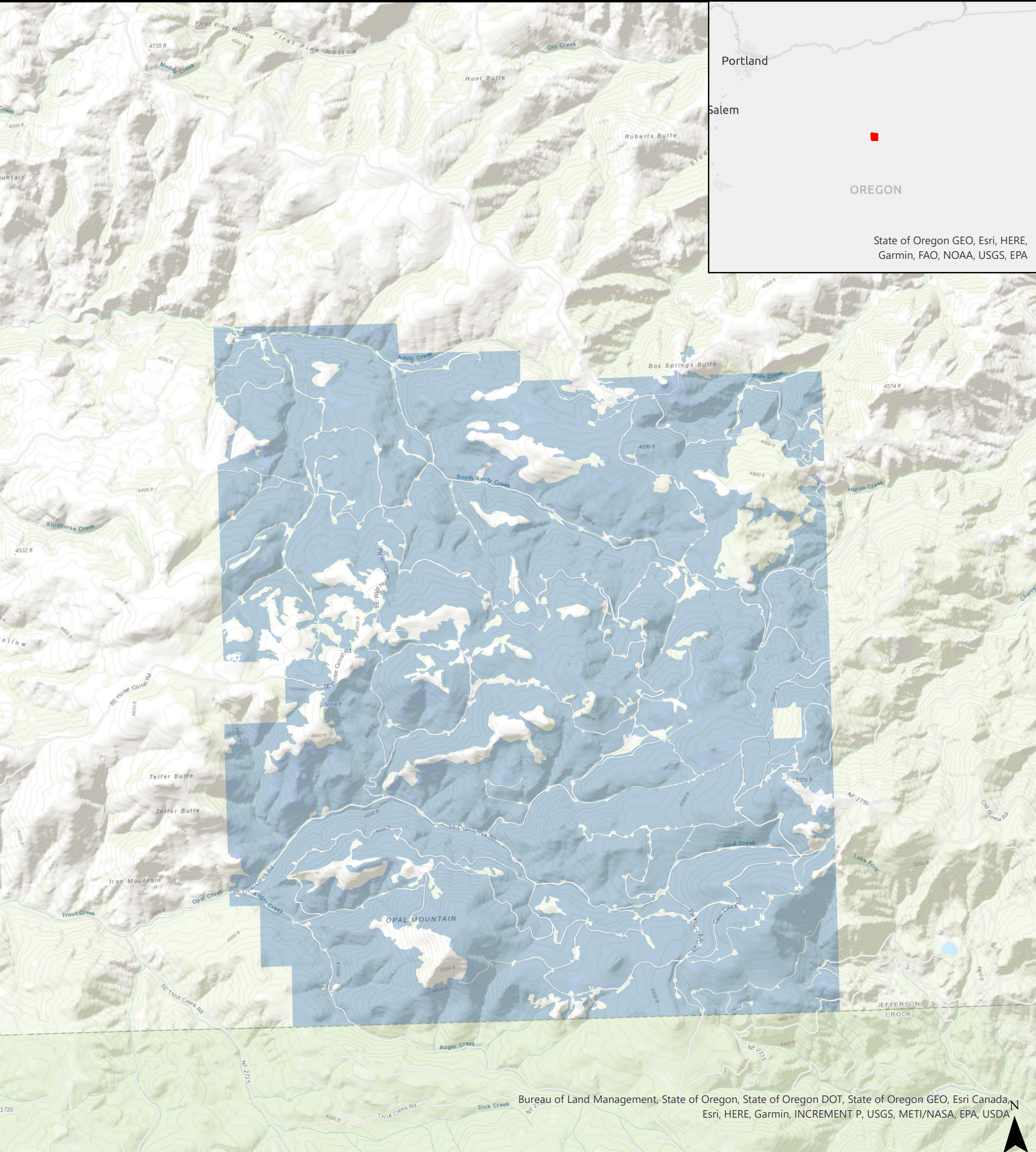
*Situated in the State of Oregon*

and being part of an Improved Forest Management  
project developed using the ARB U.S. Forests  
Compliance Offset Protocol and identified as

**ACR554/CAFR5554**

# Finite Carbon – Opal Mountain Ranch IFM





Scale: 1:50,000

# Map Showing Topography

2/18/2021

## Legend

ProjectArea

on lands belonging to

*Opal Mountain Ranch LLC*

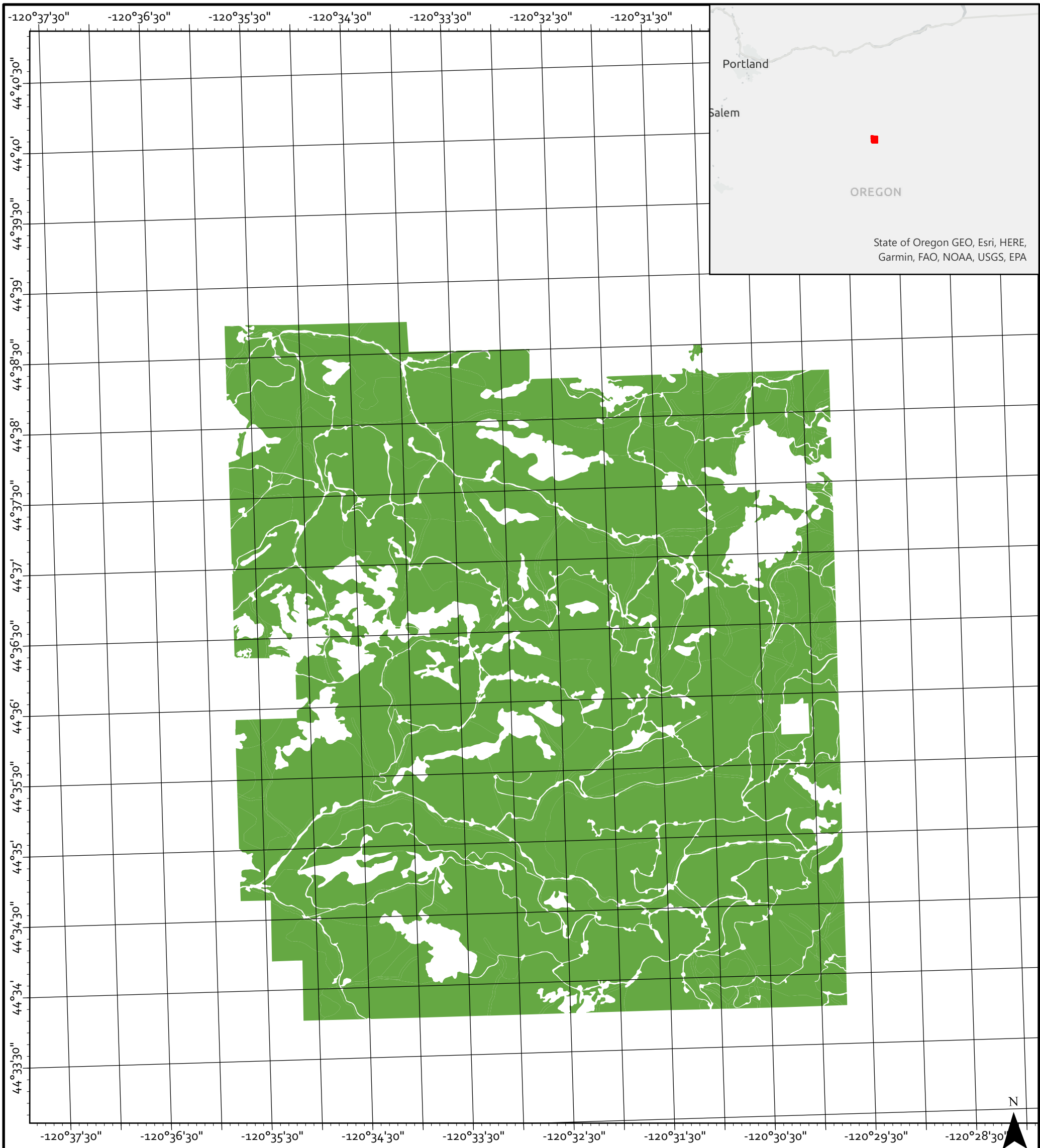
*Situated in the State of Oregon*

and being part of an Improved Forest Management  
project developed using the ARB U.S. Forests  
Compliance Offset Protocol and identified as

**ACR554/CAFR5554**

# Finite Carbon – Opal Mountain Ranch IFM





Scale: 1:50,000

Map Showing PLSS and/or Lat. & Long.

2/18/2021

Legend

ProjectArea

on lands belonging to

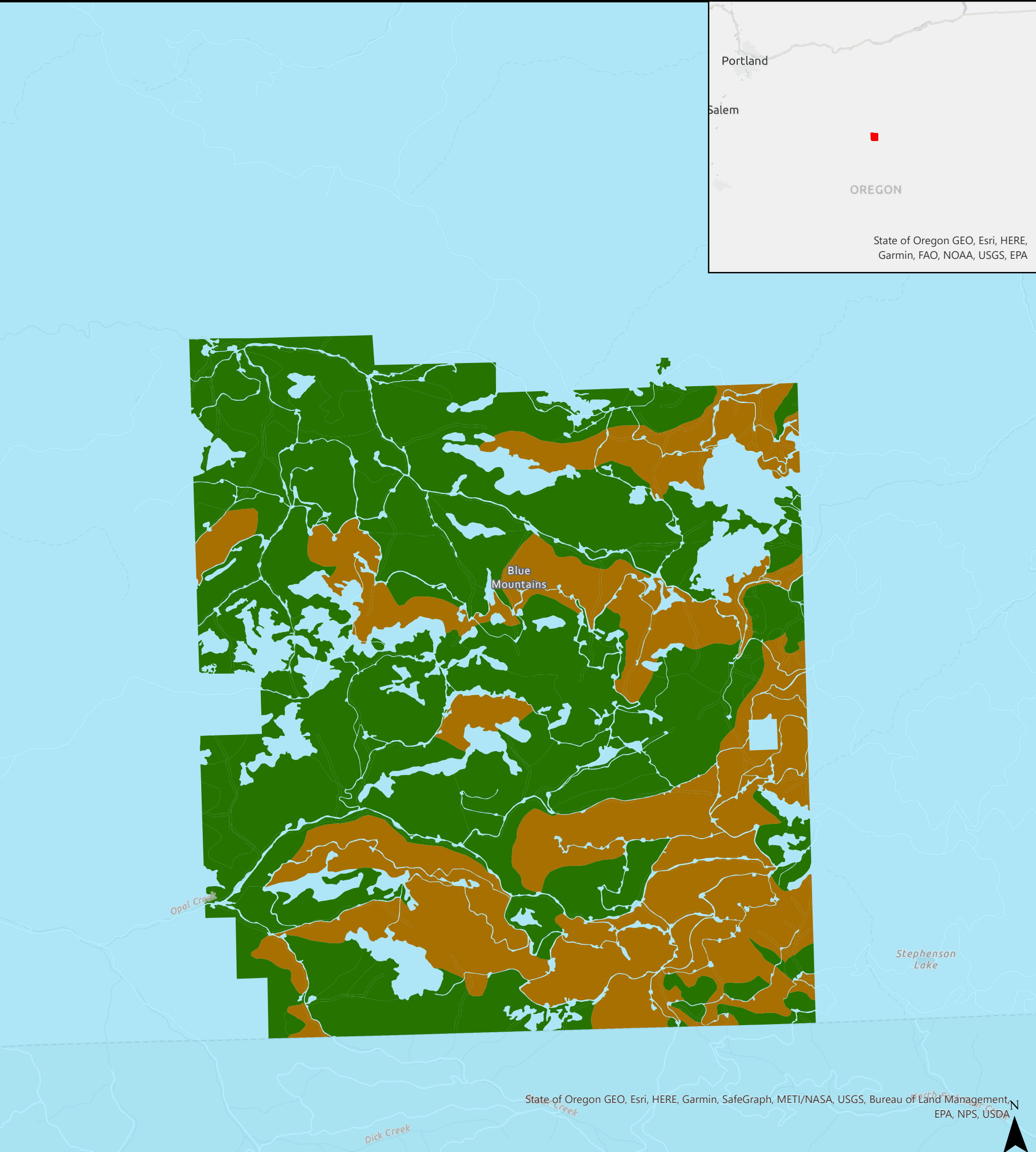
*Opal Mountain Ranch LLC*

*Situated in the State of Oregon*

and being part of an Improved Forest Management  
project developed using the ARB U.S. Forests  
Compliance Offset Protocol and identified as

**ACR554/CAFR5554**

**Finite Carbon – Opal Mountain Ranch IFM**



Scale: 1:50,000

## Map Showing ARB Supersections

2/18/2021

### Legend

- Juniper/Pinyon
- Mixed Conifer
- Blue Mountains

on lands belonging to

*Opal Mountain Ranch LLC*

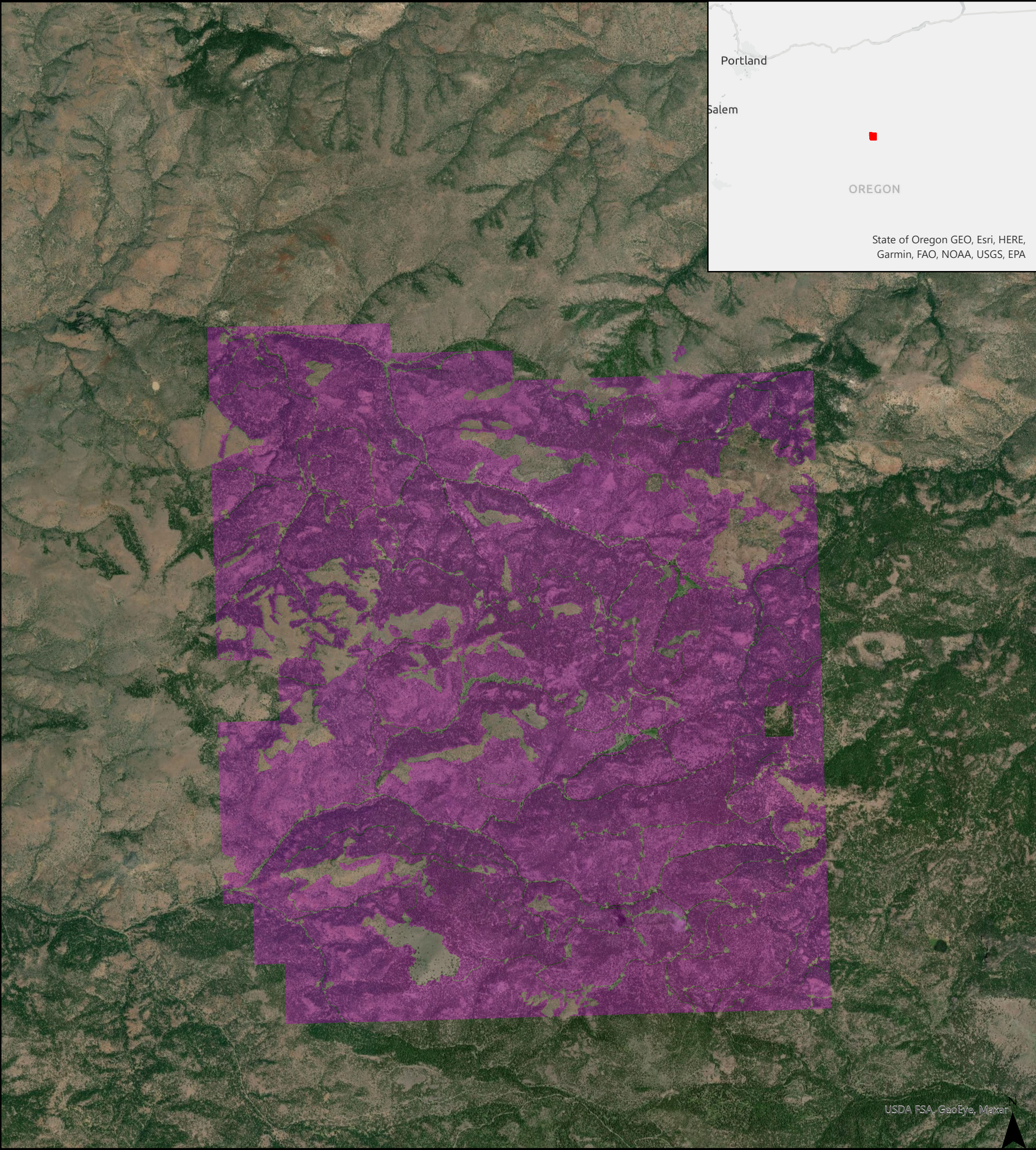
*Situated in the State of Oregon*

and being part of an Improved Forest Management  
project developed using the ARB U.S. Forests  
Compliance Offset Protocol and identified as

**ACR554/CAFR5554**

# Finite Carbon – Opal Mountain Ranch IFM





Scale: 1:50,000

# Map Showing Canopy Cover

2/18/2021

## Legend

ProjectArea

on lands belonging to

*Opal Mountain Ranch LLC*

*Situated in the State of Oregon*

Note: Source of aerial imagery is ESRI Basemap Imagery accessed on map date. In general, shades of green represent forest canopy cover greater than 10%.

and being part of an Improved Forest Management project developed using the ARB U.S. Forests Compliance Offset Protocol and identified as

**ACR554/CAFR5554**

# Finite Carbon – Opal Mountain Ranch IFM