

Scale: 1:50,000

Map Showing Towns and Roads

7/28/2020

Legend

ProjectArea

on lands belonging to

Wilks Ranch Texas, Ltd.

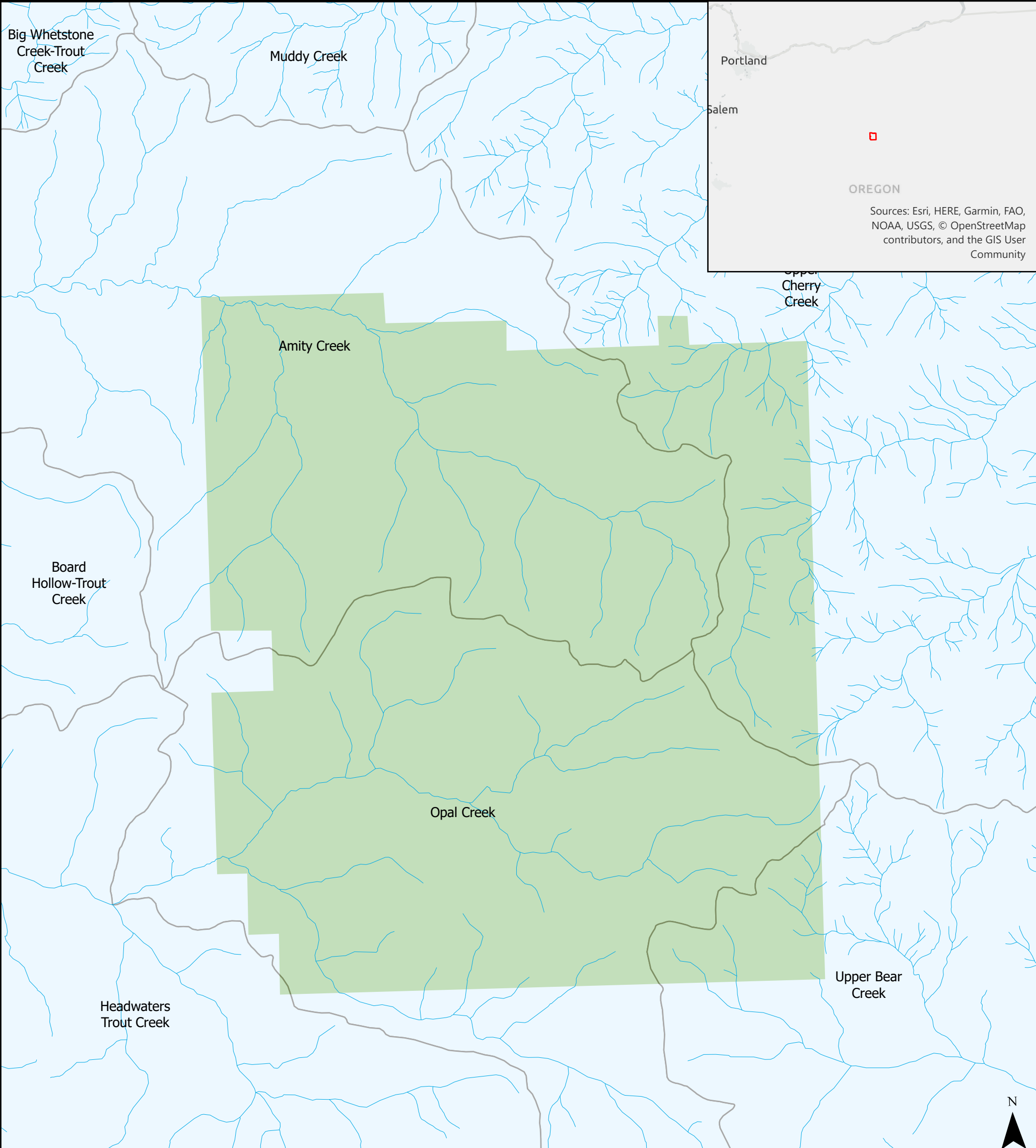
Situated in the State of Oregon

Note: If road is not indicated as a private road, it is public.

and being part of an Improved Forest Management project developed using the ARB U.S. Forests Compliance Offset Protocol and identified as

ACR554

Finite Carbon – Opal Mountain Ranch IFM



Scale: 1:50,000

Map Showing Major Watercourses

7/28/2020

- Legend
- Watercourses
 - ProjectArea
 - Hydrological Units

on lands belonging to

Wilks Ranch Texas, Ltd.

Situated in the State of Oregon

and being part of an Improved Forest Management
project developed using the ARB U.S. Forests
Compliance Offset Protocol and identified as

ACR554

Finite Carbon – Opal Mountain Ranch IFM



Scale: 1:50,000

Map Showing Topography

7/28/2020

Legend

 ProjectArea

on lands belonging to

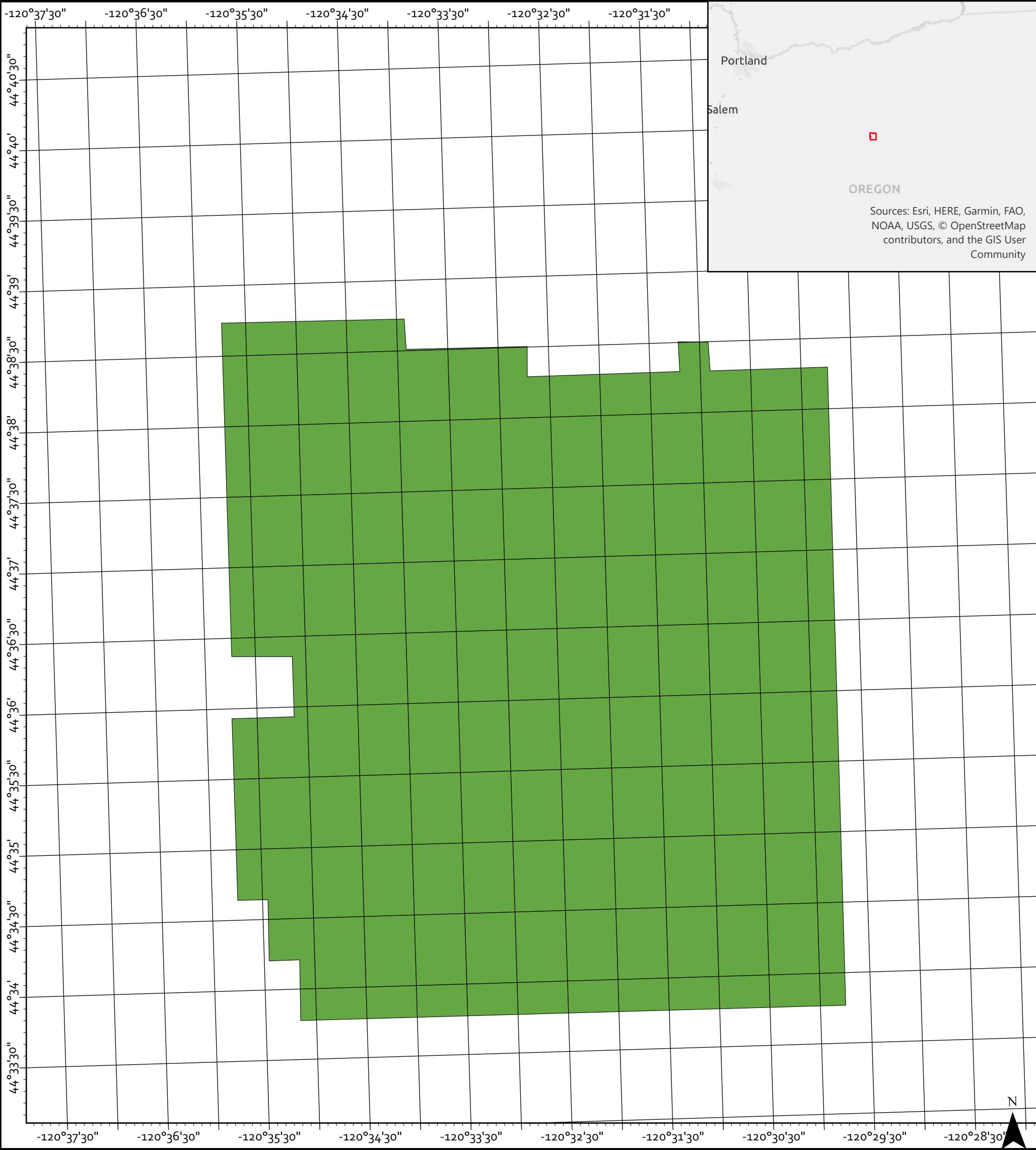
Wilks Ranch Texas, Ltd.

Situated in the State of Oregon

and being part of an Improved Forest Management
project developed using the ARB U.S. Forests
Compliance Offset Protocol and identified as

ACR554

Finite Carbon – Opal Mountain Ranch IFM



Scale: 1:50,000

Map Showing PLSS and/or Lat. & Long.

7/28/2020

Legend

ProjectArea

on lands belonging to

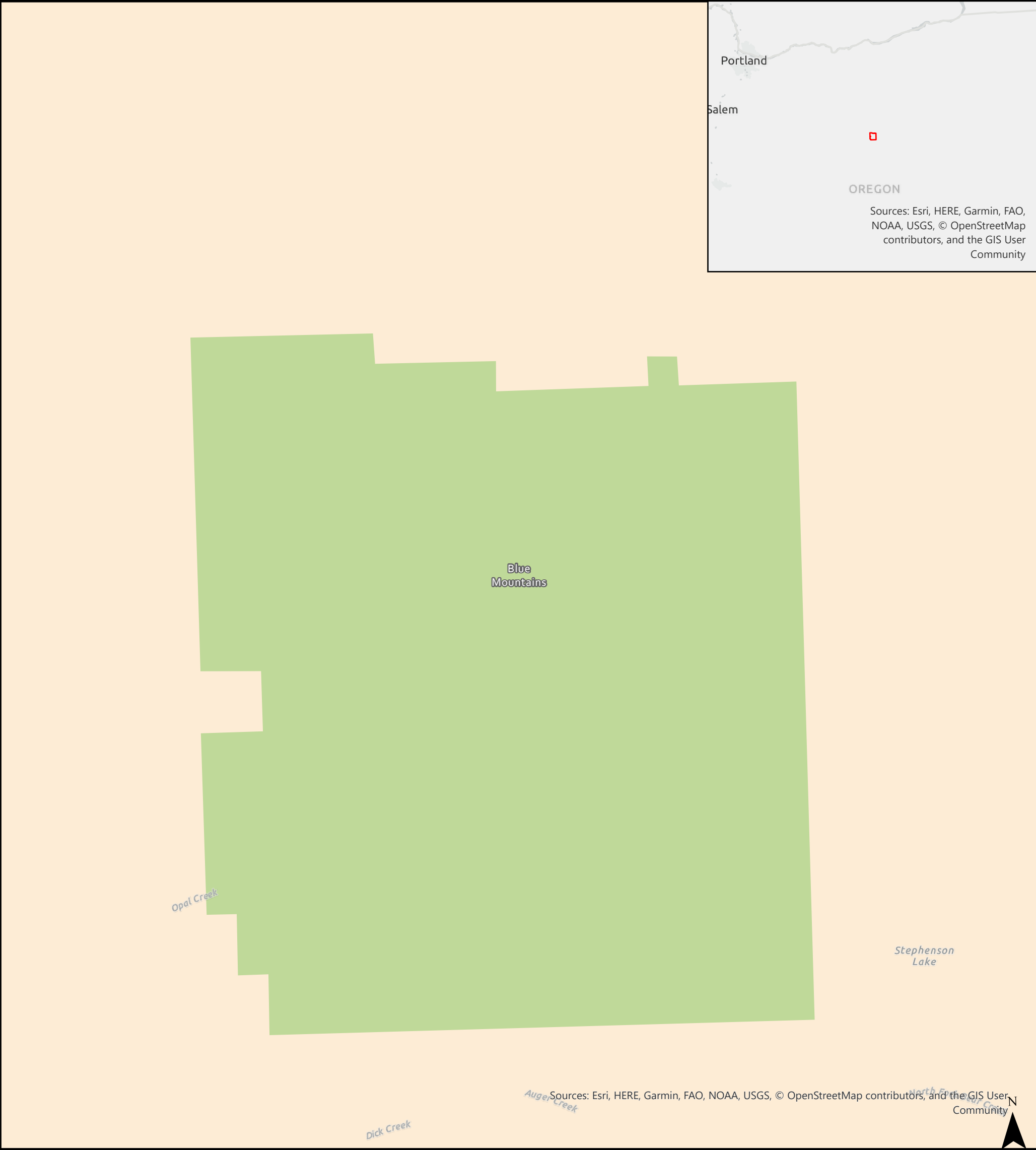
Wilks Ranch Texas, Ltd.

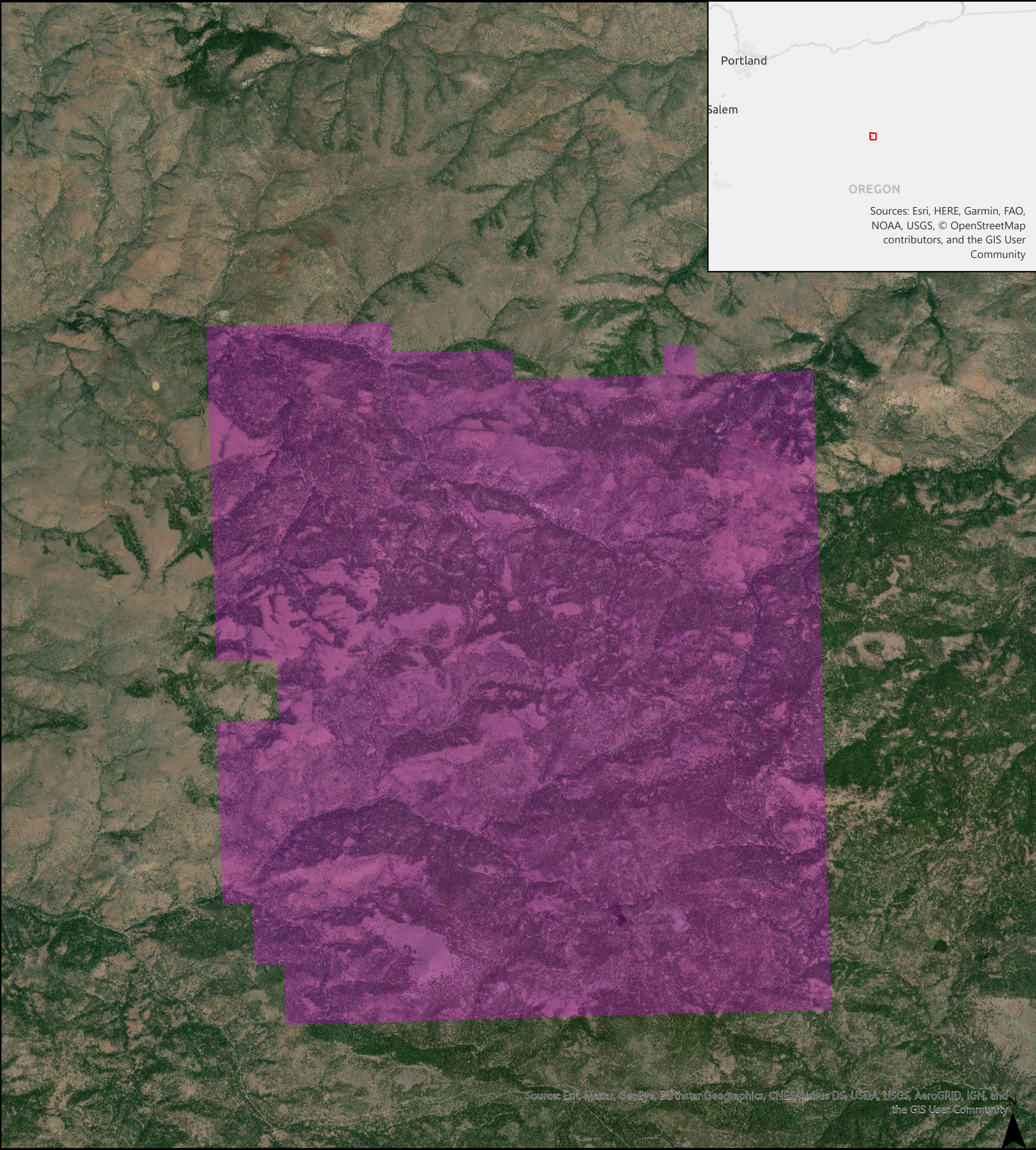
Situated in the State of Oregon

and being part of an Improved Forest Management
project developed using the ARB U.S. Forests
Compliance Offset Protocol and identified as

ACR554

Finite Carbon – Opal Mountain Ranch IFM





Scale: 1:50,000

Map Showing Canopy Cover

7/28/2020

Legend

ProjectArea

on lands belonging to

Wilks Ranch Texas, Ltd.

Situated in the State of Oregon

and being part of an Improved Forest Management
project developed using the ARB U.S. Forests
Compliance Offset Protocol and identified as

ACR554

Finite Carbon – Opal Mountain Ranch IFM