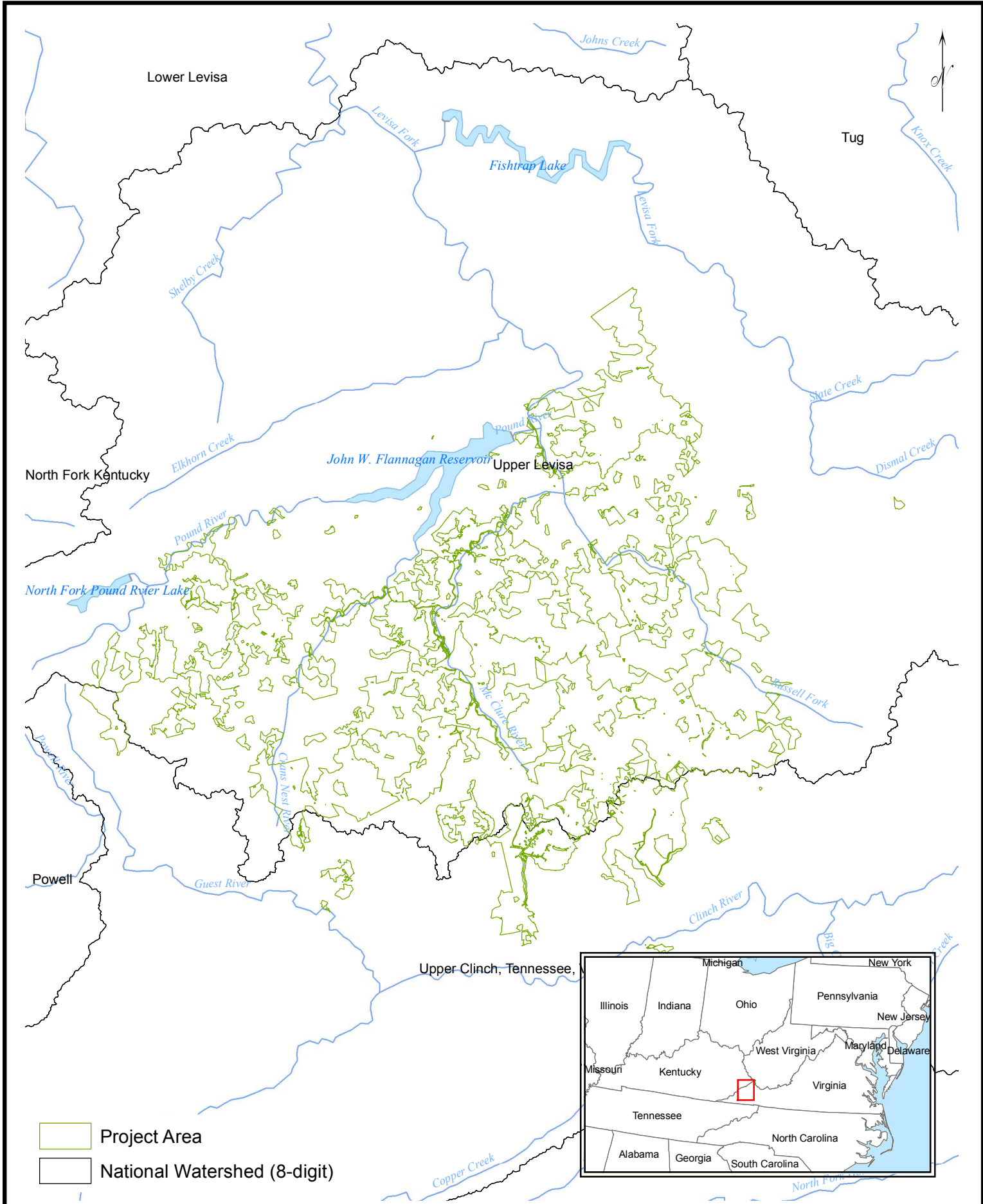


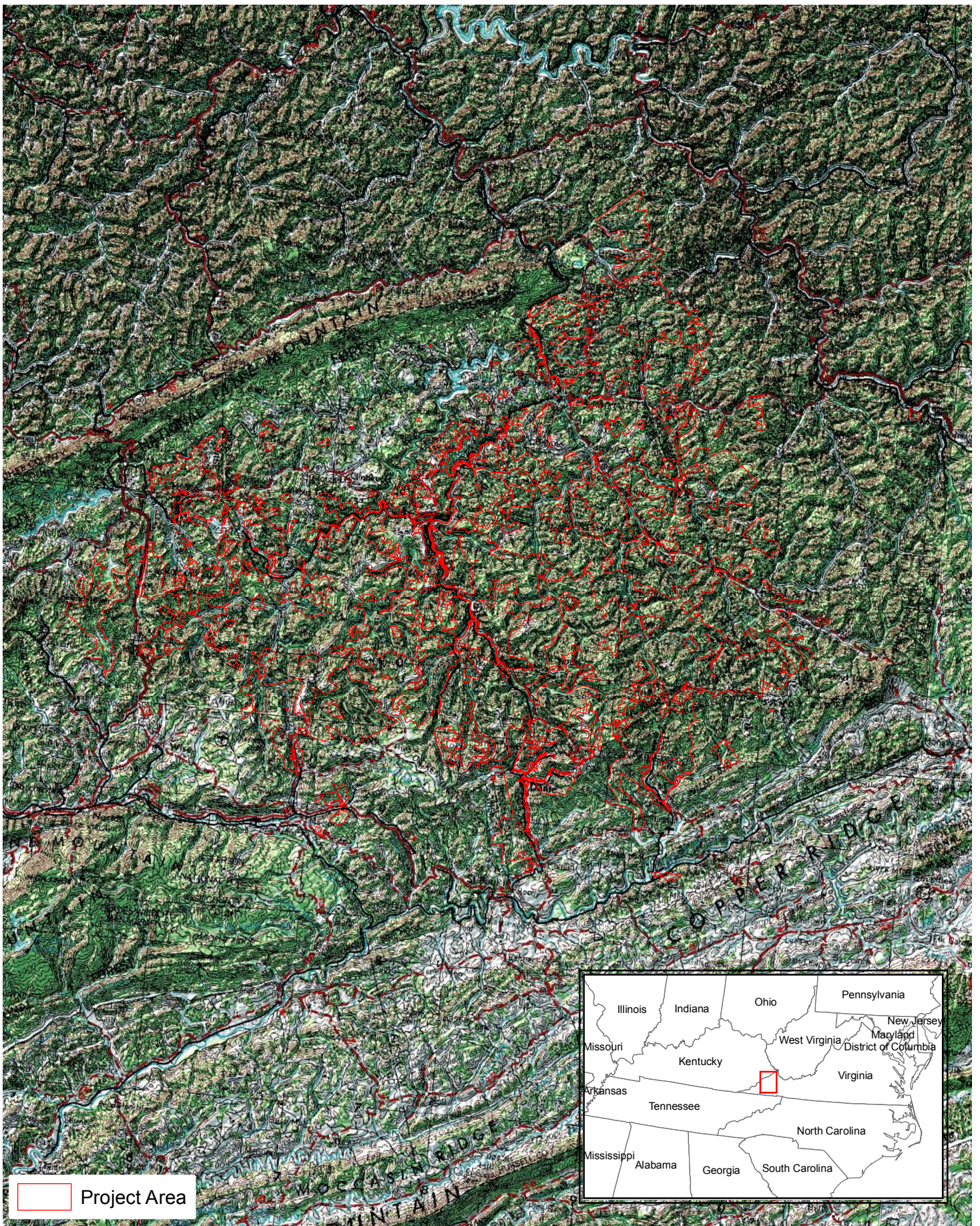
1 in = 5 miles

May 2015

Note: there
are no private
roads

Map Showing Towns and Roads
on lands belonging to
Heartwood Forestland Fund IV, LP
Situate in the State of Virginia
and being part of an Improved Forest Management project
developed using the ARB U.S. Forests Compliance Offset Protocol
and identified as
ACR248
Finite Carbon - The Forestland Group Highlands IFM





1 in = 5 miles

May 2015

Map Showing Topography

on lands belonging to

Heartwood Forestland Fund IV, LP

Situate in the State of Virginia

*and being part of an Improved Forest Management project
developed using the ARB U.S. Forests Compliance Offset Protocol
and identified as*

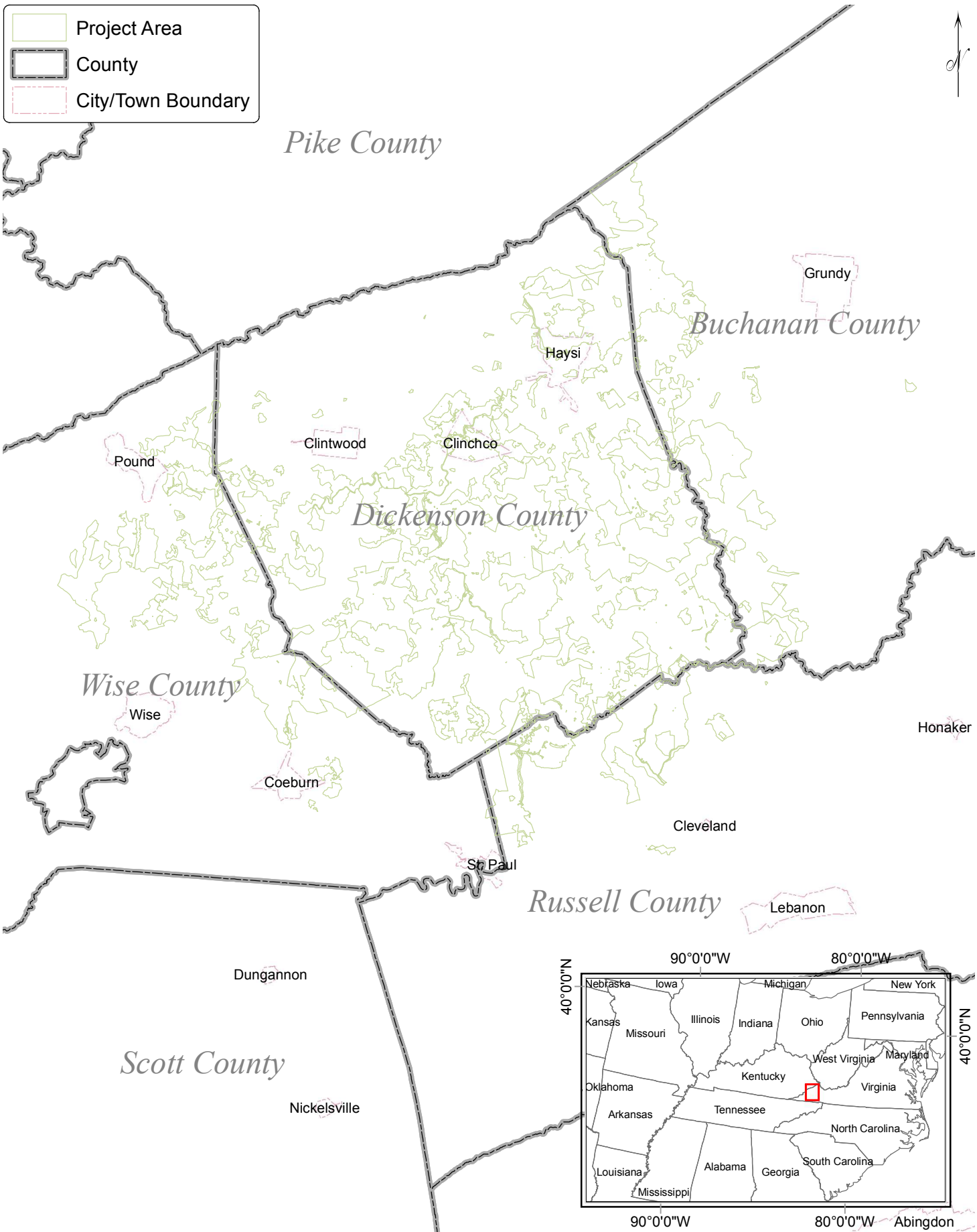
ACR248

Finite Carbon - The Forestland Group Highlands IFM

Project Area

County

City/Town Boundary



1 in = 5 miles

May 2015

Map Showing Project Area

on lands belonging to

Heartwood Forestland Fund IV, LP

Situate in the State of Virginia

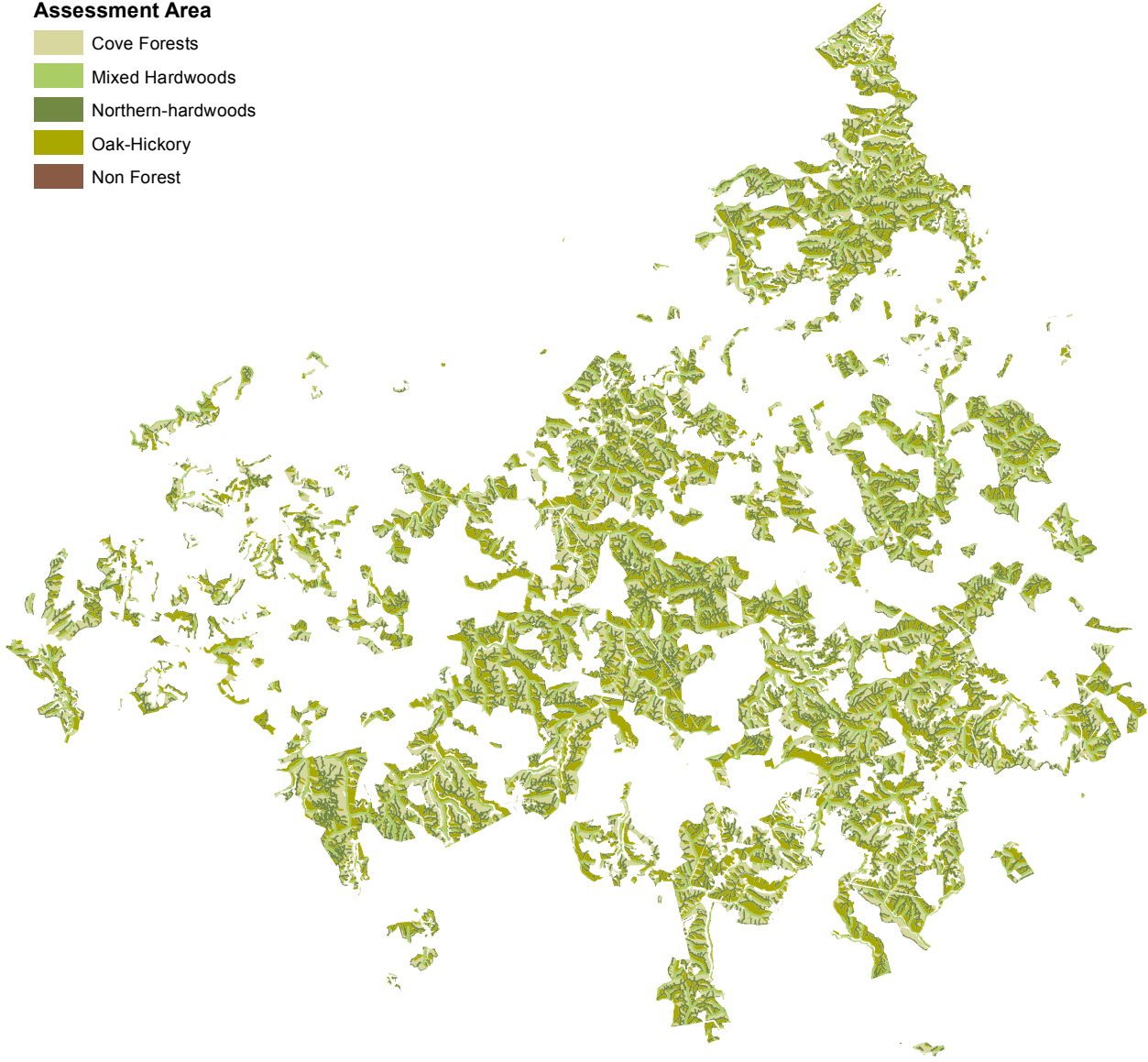
and being part of an Improved Forest Management project
developed using the ARB U.S. Forests Compliance Offset Protocol
and identified as

ACR248

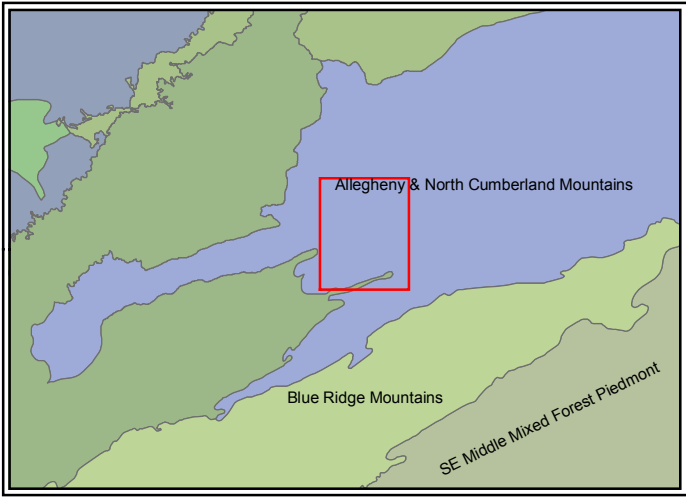
Finite Carbon - The Forestland Group Highlands IFM

Assessment Area

- Cove Forests
- Mixed Hardwoods
- Northern-hardwoods
- Oak-Hickory
- Non Forest



1 in = 5 miles



May 2015

Map Showing Assessment Areas
on lands belonging to
Heartwood Forestland Fund IV, LP
Situate in the State of Virginia
and being part of an Improved Forest Management project
developed using the ARB U.S. Forests Compliance Offset Protocol
and identified as

ACR248

Finite Carbon - The Forestland Group Highlands IFM