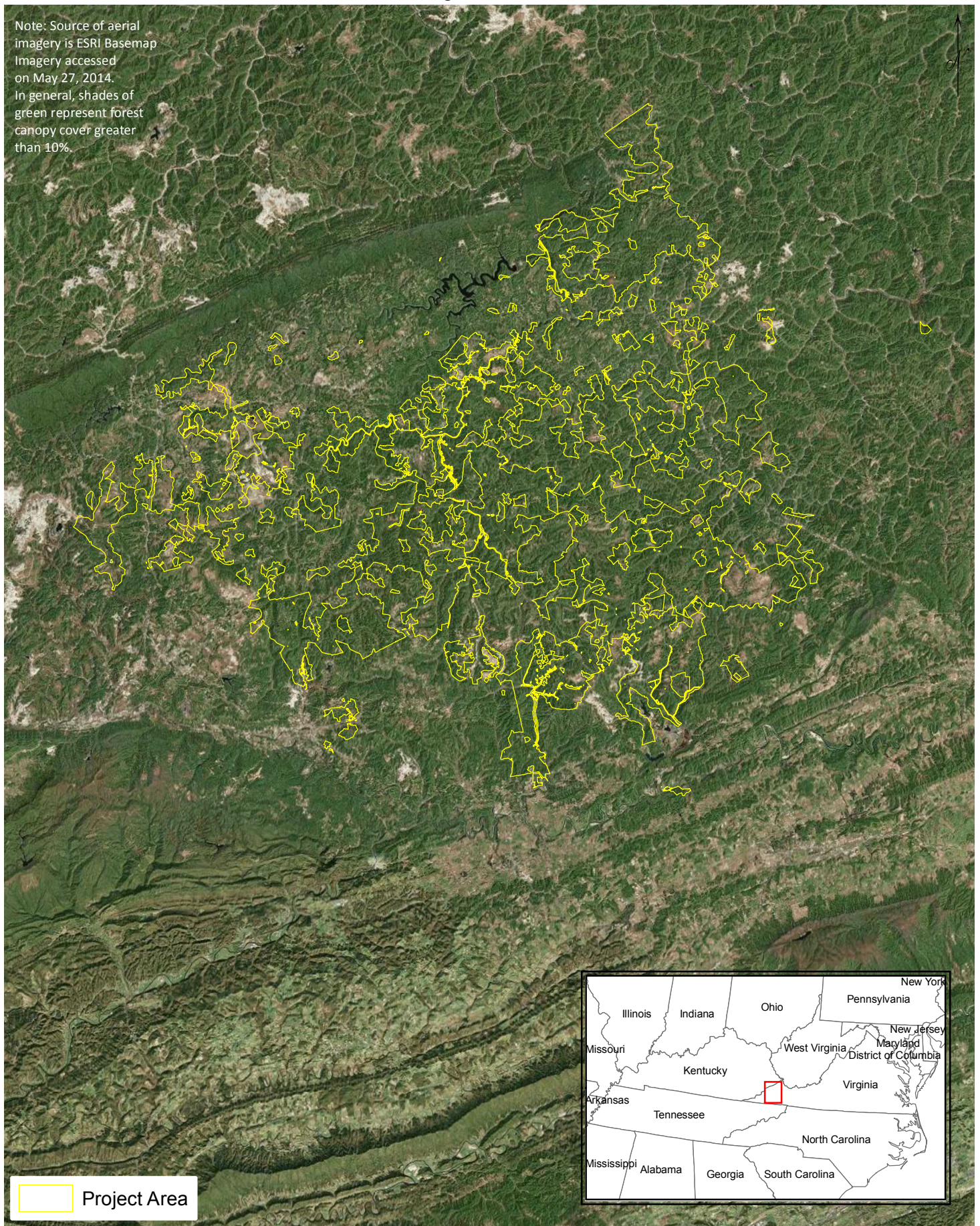


Note: Source of aerial imagery is ESRI Basemap Imagery accessed on May 27, 2014. In general, shades of green represent forest canopy cover greater than 10%.



1 in = 5 miles

May 2015

*Map Showing Tree Canopy Cover  
on lands belonging to  
Heartwood Forestland Fund IV, LP  
Situates in the State of Virginia  
and being part of an Improved Forest Management project  
developed using the ARB U.S. Forests Compliance Offset Protocol  
and identified as*

**ACR248**

**Finite Carbon - The Forestland Group Highlands IFM**